

QUESTION 1

Where has flooding occurred and how have you and your neighbors been affected?

SIGNIFICANT FLOODING CONCERNS IN EVERY WARD:

- CITY DOES NOT SUPERVISE FLOOD ISSUES ENOUGH
- TOO MUCH DEVELOPMENT IN THE FLOODPLAIN

NEIGHBORHOOD RECOMMENDATIONS FOR SOLUTIONS:

- REGIONAL STUDY OF ENGLEWOOD AND SURROUNDING TOWNS
- INDEPENDENT ENGINEERS (ARMY CORE OF ENGINEERINGS)
- ENGINEERING REVIEW OF EVERY APPLICATION INCLUDING SF
- MORE GOVERNMENT OVERSIGHT OF DEVELOPMENT IN FLOOD AREAS
- CREATE RETENSION PONDS
- CLEAN OUT DRAINAGE SYSTEM REGULARLY
- MORE MAINTENANCE
- CRYSTAL LAKE AS A WATER DETENTION AREA

SINGLE FAMILY RECOMMENDATIONS FOR SOLUTIONS

- NO INCREASE TO IMPERVIOUS COVERAGE TO SINGLE FAMILY
- CONSIDER CISTERNS FOR ROOF DRAINAGE
- MORE TREES, BIOSWALES, STORMWATER STORAGE
- LIMIT EXPANSION OF EXISTING SINGLE FAMILY IMPERVIOUS
- MORE ENFORCEMENT ON IMPROVEMENTS

QUESTION 2

Should the City of Englewood invest in improving infrastructures such as: rain gardens, flood storage, green rooftops, water basins, etc.?

YES TO EVERYTHING - URGENTLY NEEDED

GENERAL STATEMENT / GOVERNMENT ACTIONS:

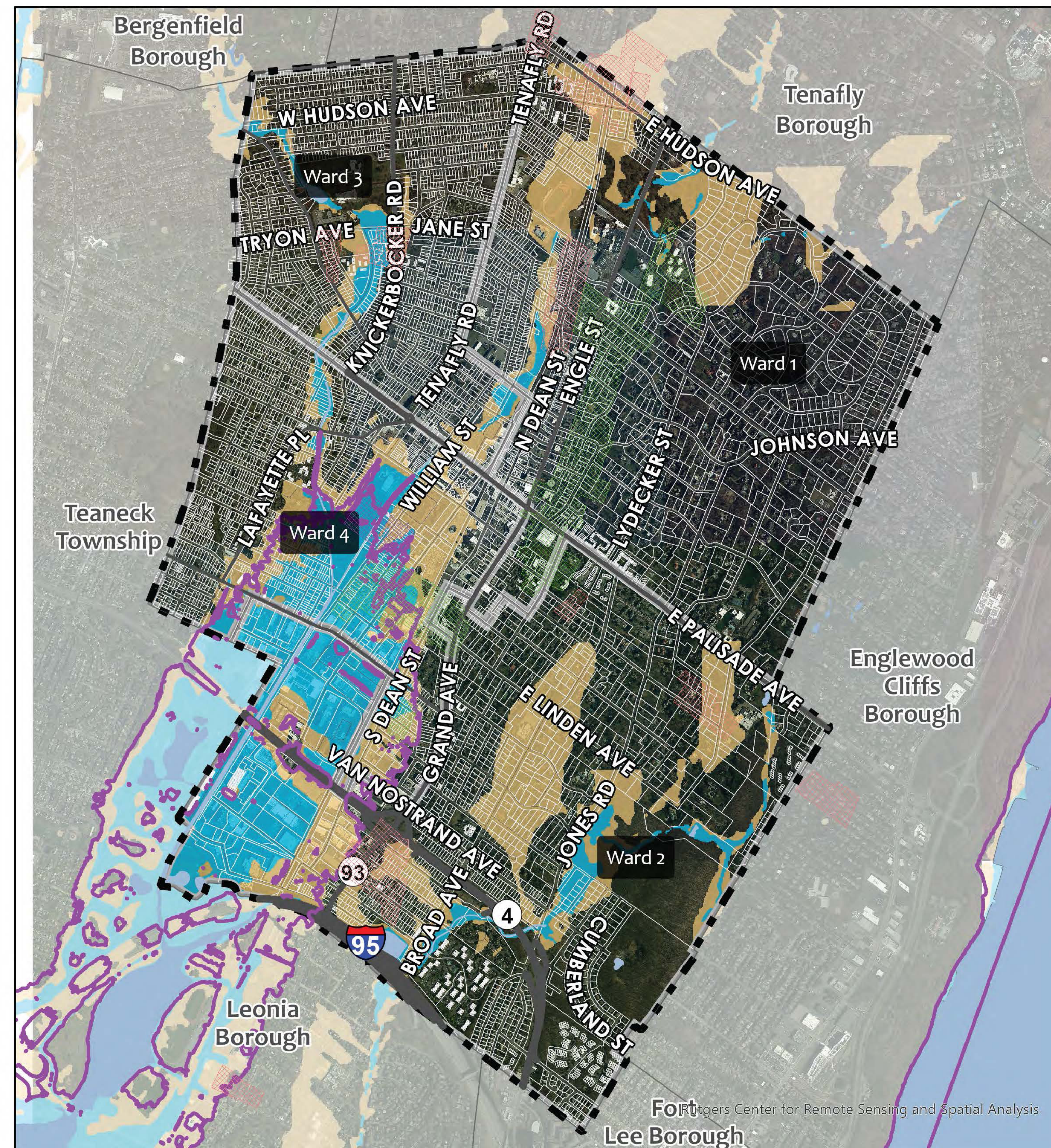
- ENGINEERING STUDY TO DETERMINE WHERE WATER IS COMING FROM
- CITY KEEPS CUTTING DOWN TREES AND NOT REPLACING THEM
- DREDGE CREEKS AND WATERWAYS MORE OFTEN
- MORE ANNUAL MAINTENANCE
- COORDINATE EFFORTS REGIONALLY AND WITH ADJACENT TOWNS
- SEEK GRANT FUNDING FOR STUDIES AND SOLUTIONS

DEVELOPMENT ACTIONS:

- REQUIRE GREEN INFRASTRUCTURE FOR NEW DEVELOPMENT
- REQUIRE RAINWATER COLLECTION
- DEVELOPERS FUND LARGER REGIONAL SOLUTIONS
- STORMWATER STORAGE FOR NEW BUILDINGS
- MORE TREES, MORE GREEN SPACES
- CISTERNS FOR SINGLE FAMILY
- ENFORCE MAXIMUM IMPERVIOUS COVERAGE FOR SINGLE FAMILY

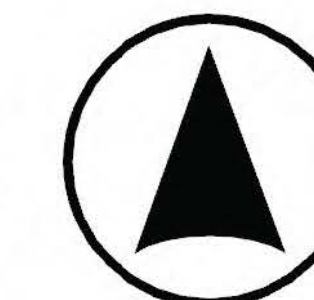
FLOODING & STORMWATER

CLIMATE ADJUSTED FLOODPLAINS 3 FEET HIGHER THAN FEMA FLOOD HAZARD ELEVATION



- Englewood Boundary
- Ward
- Sandy Extent
- FEMA 1% Annual Chance Flood Hazard + 3 ft
- FEMA 1% Annual Chance Flood Hazard
- Ocean/Bay/Major River Waters

DMR
ARCHITECTS



QUESTION 4

Where on the map have you been affected by flooding? Place the dot on the map above

QUESTION 3

How has flooding affected critical facilities such as hospitals, schools, emergency services, childcare, or centers of work and business like the Downtown or the South Englewood industrial district?

REGIONAL ACTIONS:

- CAPTURE WATER BEFORE IT AFFECTS ENGLEWOOD
- CAUSE OF FLOODING IS FROM ADJACENT TOWNS
- ESTABLISH A REGIONAL DETENTION BASIN

CITY INITIATIVES:

- STOP ALLOWING INCREASED IMPERVIOUS DEVELOPMENT
- MORE CONTROL OVER SINGLE FAMILY SITES
- REQUIRE PERMEABLE DRIVEWAYS FOR RENOVATIONS
- ROOF DRAINS TO CISTERNS

GENERAL IMPACTS:

- TOO MUCH DEVELOPMENT IN FLOOD ZONES
- SERVICES AFFECTED
 - GRIECO SCHOOL (SCHOOL BUDGET AFFECTED)
 - INDUSTRIAL AREA
 - SHOP RITE
 - 101 WEST STREET
 - NEW FOOTBALL FIELDS
- LOST JOBS AND INCOME

SIGNIFICANT IMPACTS (WARD 4):

- NO ACCESS TO GROCER
- ACCESS TO HOSPITAL
- INDUSTRIAL DISTRICT / ZONE
- LOSS OF CAPITAL ONE BANK
- LACK OF MOBILITY
- TRASH PICK-UP AFFECTED
- MOLD, ROT, DAMAGE TO PROPERTIES



CITY OF ENGLEWOOD MASTER PLAN PUBLIC ENGAGEMENT PUBLIC WORKSHOP RESPONSES

DMR
ARCHITECTS

QUESTION 1

MIXED RESPONSES REGARDING ACCESSORY DWELLING UNITS:

THOSE IN FAVOR:

- NOT MORE THAN 2 UNITS
- ALLOWS FOR AGE IN PLACE OPPORTUNITIES
- FAMILY MEMBERS ONLY
- DEPENDS ON PROPERTY SIZE

CONCERNS RAISED (IN FAVOR AND NOT IN FAVOR):

- OVER POPULATION / DENSITY
- PARKING IN NEIGHBORHOODS
- SCHOOL AGE CHILDREN
- NO AIR BNB'S
- DESIGN CRITERIA TO KEEP SAME LOOK AND FEEL
- NEED OVERSIGHT
- NO INCREASE TO THE BUILDING FOOTPRINT
- NO ADDITIONAL IMPERVIOUS AREA
- NO SINGLE ROOM OCCUPANTS
- SHOULD MAINTAIN BUILDING SETBACKS

QUESTION 2

LOCATION:

- LOCATE IN DOWNTOWNS NOT IN NEIGHBORHOODS
- LOCATE WITHIN EXISTING BUILDINGS
- DISTRIBUTE UNITS EVENLY WITHIN THE 4 WARDS

POLICY:

- CREATE INCENTIVES FOR AFFORDABLE HOUSING
- INCREASE REQUIREMENT TO MORE THAN 15%
- NEED HIGHER PERCENTAGE OF LOWER INCOME HOUSING

HOUSING



QUESTION 5

QUESTION 3

MAJORITY WERE AGAINST 2 TO 5 APARTMENTS:

- ADDED TRAFFIC
- POOR INFRASTRUCTURE / DRAINAGE

CONSIDER UNDER THE FOLLOWING CIRCUMSTANCES:

- BETTER THAN APARTMENT BUILDINGS
- IF DONE IT NEEDS TO FIT THE CHARACTER OF THE NEIGHBORHOOD
- ONLY FOR SENIOR HOUSING
- SHOULD PROVIDE ACCESSIBILITY
- LOCATED NEAR TRANSIT / BUS / SERVICES
- NO MORE THAN TWO FAMILY
- RETROFIT EXISTING BUILDINGS

QUESTION 4

NEED MORE SENIOR HOUSING FOR DOWNSIZING:

- SHOULD BE EQUITABLE AND INCLUSIVE
- LOCATED NEAR
 - SERVICES, TRANSPORTATION, DOWNTOWN, PARK / OPEN SPACE
- ENFORCEMENT FOR REOCCUPANCY
- PROVIDE ACCESSIBILITY
- MULTI-GENERATIONAL FAMILIES IN ONE HOME
- LOCATED IN ALL 4 WARDS

LIBERTY SCHOOL POTENTIALLY

111 WEST STREET

- INCREASE NUMBER OF FLOORS TO ADD SENIOR HOUSING



QUESTION 1

What do you envision the Liberty School should be? How can the Liberty School bring the community together?

NO CONSENSUS ON THE PROPOSED USES:

MAJORITY OF RESPONSES INCLUDED:

- PRESERVE THE HISTORIC STRUCTURE
- PROVIDE A VARIETY OF USES WITH MOST STATING
 - COMMUNITY / CULTURAL / RECREATION CENTER

OTHER RESPONSES:

- HAVE IT PAY FOR ITSELF WITH SOME REVENUE GENERATING USES
 - THINK CREATIVELY
 - SELF SUPPORTING (FINANCIALLY)
 - DEVELOPMENT COMMUNITY PAY TOWARD IMPROVEMENTS
- COMBINATION OF USES FOR VARIETY OF AGE GROUPS
 - SENIOR CENTER / SENIOR HOUSING
 - TEEN CENTER
 - MUSIC CENTER
 - MENTAL HEALTH / SOCIAL / FINANCIAL SERVICES
 - COUNSELING SERVICES
 - JOB TRAINING / SKILLS BUILDING
 - EDUCATIONAL LEARNING SERVICES
 - RESEARCH CENTER
 - NON PROFIT HUB
 - TECHNOLOGY AND COMPUTER SERVICES
 - PERFORMING ARTS FOR CHILDREN
 - DAYCARE / AFTER SCHOOL PROGRAMMING
 - AFFORDABLE HOUSING
 - SELL IT TO A DEVELOPER
 - DEMO AND REDEVELOP

LIBERTY SCHOOL

HOUSING



RECREATION CENTER



COMMUNITY FACILITY



PERFORMING ARTS CENTER



HOUSING OPTIONS

Senior Housing
Affordable housing
Apartments
Assisted Living
Other

REC CENTERS OPTIONS

Basketball Courts
Pool
Art Rooms
Music Rooms
Performance Space
Other

COMMUNITY FACILITY OPTIONS

City Hall
Health Clinic
Career Center
Daycare/Pre-K
Library
Other

PERFORMING ARTS OPTIONS

Dancing
Music
Stage Mangement
Production Design
Drama
Other



CITY OF ENGLEWOOD MASTER PLAN PUBLIC ENGAGEMENT

PUBLIC WORKSHOP RESPONSES



CITY OF ENGLEWOOD QUALITY OF LIFE

COST OF LIVING

WHAT ARE YOUR CONCERNS:

- BUSINESS / COMMERCIAL / LAND USE:**

- GOVERNMENT / TAXES / SERVICES:**

- COST OF LIVING
- COST TOO MUCH TO RAISE A FAMILY
- LONGTIME RESIDENTS PRICED OUT
- TAXES ARE GOING UP AND SERVICES ARE GOING DOWN
- BETTER SCHOOLS
- GET GRANTS TO FUND PUBLIC PROJECTS
- LOWER TAXES FOR SENIORS
- MANAGE CITY BUDGET

HOUSING:

- NEED A PLAN FOR HOMELESSNESS
- FLIPPING HOUSES
- TOO MANY LUXURY BUILDINGS

WHAT DID WE MISS?

WHAT ARE YOUR CONCERNS:

PLANNING ISSUES:

- ### PARKS AND RECREATION:

- HISTORIC PRESERVATION PLAN (2014 MP)
- NEED MORE RATEABLES
- GAS LEAF BLOWER ORDINANCE
- OVER DEVELOPMENT
- AFFORDABLE HOUSING OPTIONS FOR ALL
- SENIOR HOUSING BACK TO WEST STREET
- STOP BUILDING HIGH RISE APARTMENTS
- VACANT HOMES NOT CARED FOR
- GARBAGE PICK-UP (BULK ITEMS / BINS)

- MCKAY PARK (LIGHTS / OTHER)
- IMPROVE FACILITIES (BATHROOMS)
- PARK ON FOREST AVENUE
- WATER FOUNTAIN (MEMORIAL PARK)
- DOG PARK(S)
- BETTER SIGNAGE
- IMPROVE SWIMMING POOLS
- MORE PROGRAMS FOR SENIORS / DISABLED
- MORE SITTING AREAS
- RESTORE SUMMER CAMP PROGRAMS

- TRANSPORTATION / PARKING / PEDESTRIAN:**

- PROVIDE A WALKABILITY ANALYSIS

- PROVIDE A WALKABILITY ANALYSIS
- LIGHT RAIL SERVICE
- ADA ACCESSIBILITY
- BUSINESS OWNERS PARK OFF STREET
- COST OF TRANSPORTATION

SCHOOLS:

- IMPROVE SCHOOL SYSTEM
- RETAIN EDUCATORS
- TRADE SCHOOLS

DOWNTOWN:

- WANT BOOKSTORE / MOVIE THEATER
- BETTER CLEANLINESS
- MORE COMMUNITY EVENTS



CITY OF ENGLEWOOD MASTER PLAN PUBLIC ENGAGEMENT

PUBLIC WORKSHOP COMMENTS

QUESTION 1

WHERE IN THE DOWNTOWN WOULD ADDITIONAL PARKING BE MOST BENEFICIAL?

IMPROVE ENGLEWOOD AVE. PARKING STRUCTURE:

- SIGNAGE
- SAFETY (PATROLS)
- LIGHTING
- WALKABILITY / ACCESS
- WAYFINDING

FIX TRAFFIC ISSUES:

- DOUBLE PARKING
- ILLEGAL U-TURNS
- SCOOTERS

OTHER SUGGESTIONS:

- ADD SOME 15 / 30 MINUTE PARKING
- BETTER WALKABILITY TO DOWNTOWN
- BICYCLE LANES
- ELIMINATE ON STREET PARKING BY TENANTS

QUESTION 3

WHAT USES/ACTIVITIES ARE MISSING THAT WOULD MAKE THE DOWNTOWN BETTER?

DOWNTOWN USES:

- MORE RESTAURANTS CLOSER TO THE CIRCLE
- SECOND GROCERY STORE
- MOVIE THEATER
- BOOKSTORE
- HOTEL NEAR DOWNTOWN
- MORE OUTDOOR EATING AREAS
- REDESIGN SHOP RITE PARKING (MORE EFFICIENT)
- BARGAIN STORES INSTEAD OF LUXURY STORES
- ROLLER SKATING RINK

PUBLIC IMPROVEMENTS / AMENITIES:

- WAYFINDING SIGNAGE NEEDS TO BE INSTALLED
- NEED MORE PARKING AND HANDICAP SPACES
- ADD SENIOR FRIENDLY SPACES
- FIX TRAFFIC SIGNALING
- ADD MORE PUBLIC BENCHES
- MORE COMMUNITY EVENTS (FREE)
 - FESTIVALS / OUTDOOR CONCERTS /
 - PLAYS / FARMERS MARKET / 5 K RUNS
- COMMUNITY CENTER
- LIBERTY SCHOOL USED FOR YOUNG PEOPLE
- JITNEY / TROLLEY SERVICE
- MORE LIGHTING
- FREE WIFI
- MORE PUBLIC BATHROOMS

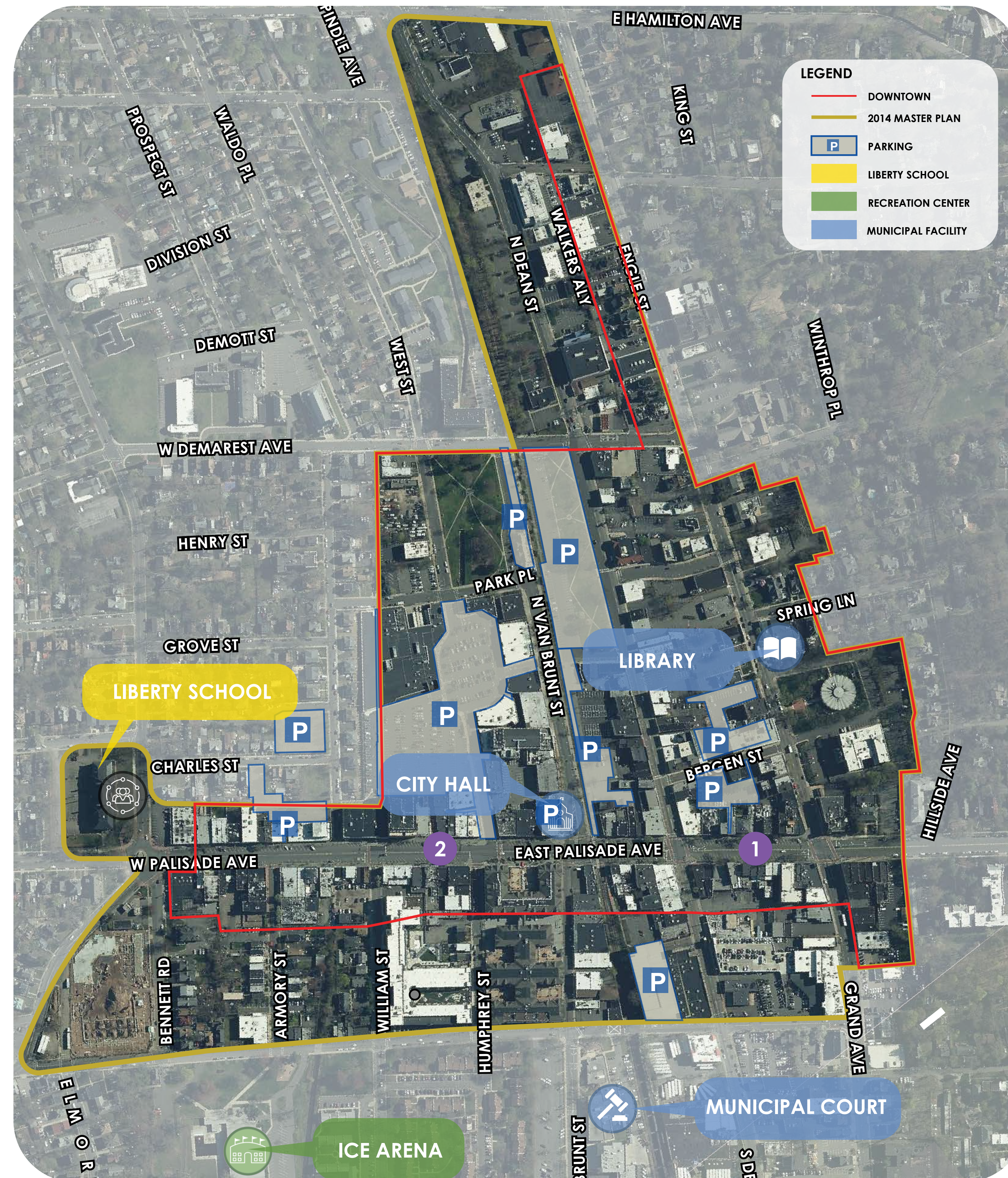
BUSINESSES:

- SIDEWALK SALES FOR EXISTING BUSINESSES
- WANT MORE DIVERSITY IN USES AND OWNERSHIP
- MORE RULES ABOUT HOURS OF OPERATION

ENFORCEMENT / MAINTENANCE:

- MORE FREQUENT TRASH COLLECTION
- MORE POLICE FOOT PATROL
- MORE FREQUENT STREET / SIDEWALK CLEANING
- MORE UPKEEP / STREET CLEANING
- MORE PARKING ENFORCEMENT

THE DOWNTOWN



QUESTION 2

WHAT ARE THE THINGS YOU LIKE MOST ABOUT DOWNTOWN?

QUALITIES:

- CONVENIENT
- VISUALLY NICE
- SMALL COMMUNITY FEEL
- WALKABLE
- DIVERSITY
- NICE NEW RESTAURANTS
- GOOD FOOD SERVICE

BUSINESSES:

- VARIETY OF STORES / SHOPS / CAFES
- SHOP RITE (SUPERMARKET)
- URGENT CARE

PUBLIC FACILITIES:

- LIBRARY OFFERS MANY ACTIVITIES
- BERGEN PAC (MULTI-CULTURAL EVENTS / PROGRAMS)
- WOMENS CENTER (SUPPORTS PEOPLE IN NEED OF JOBS)
- BERGEN FAMILY CENTER (ELDERLY DAYCARE & EARLY CHILDCARE)

QUESTION 4

WHAT BUSINESSES, SERVICES, EXPERIENCES, OR OPPORTUNITIES WOULD MAKE THE DOWNTOWN STRONGER, MORE RESILIENT, AND BETTER SERVE THE CITY'S RESIDENTS AND VISITORS?

DOWNTOWN USES:

- ANOTHER SUPERMARKET
- MOVIE THEATER
- GYM
- HARDWARE STORE
- LOCALLY OWNED BUSINESSES (NOT NATIONAL BRANDS)
- ASSISTED LIVING CENTER
- SOME SHORT TERM / 30 MINUTE PARKING
- MORE ACCESSIBLE UBER / LYFT DROP OFF ZONES
- MORE PARKING ENFORCEMENT (DOUBLE / U-TURNS)

PUBLIC IMPROVEMENTS / AMENITIES:

- OUTDOOR STAGE
- PUBLIC SOUND SYSTEM
- MORE BENCHES / SEATING
- INFORMATION KIOSKS / DISPLAYS
- FLOWERS / POTS / PLANTS
- INFORMATIONAL RESOURCE CENTER
- MORE LOCAL BUSINESS OWNERS WHO LIVE IN ENGLEWOOD
- INCENTIVES FOR RESIDENTS TO OPEN BUSINESSES
- MORE WEATHER PROOF BUS STOPS
- MORE ELECTRICAL CHARGING STATIONS
- SIGNAGE UNIFORMITY

ENFORCEMENT / MAINTENANCE:

- MORE FREQUENT CLEANING

OTHER:

- AIR SPACE OVER SINGLE STORY BLDGS
- HIGH SCHOOL INTERNSHIP OPPORTUNITIES



CITY OF ENGLEWOOD MASTER PLAN PUBLIC ENGAGEMENT

PUBLIC WORKSHOP RESPONSES