

Appendix D Madison Park

Madison Park was identified by the City of Englewood as sites with particular need for community input and design suggestions.

D.1 Community Engagement

On November 17th, 2024 residents were invited to get to know Madison parks and to share thoughts on how it can become an improved neighborhood amenity.

2:00 pm Madison Park

Attendees were invited to share their thoughts using prepared notecards in three colors, each with a unique identification number:

- Green: What do you like about this spot the most?
- Yellow: You have never been here.
What is your first impression?
- Red: Where do you see challenges?

CUES team members assisted participants to place the card at the location that the comment referred to and mapped the placed card. A total of 70 cards were placed throughout the park!



Workshop at Madison Park



Workshop at Madison Park

Notecards placed by residents were geo-located



D.1.1 Madison Park

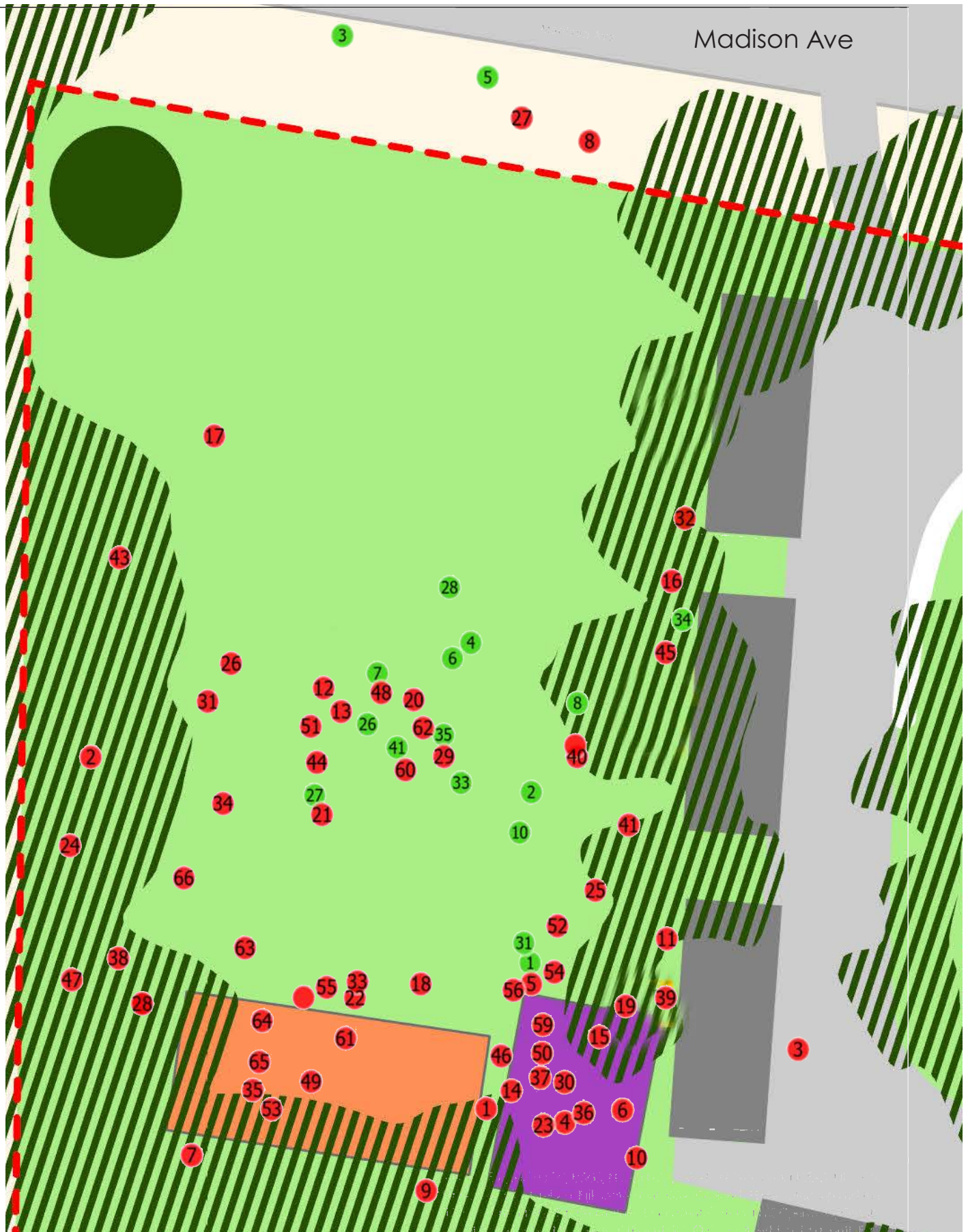
Community members praised that Madison Park presents itself as a relatively large open space, with a spacious feeling, framed by trees and shrubs (card green #1, 13). The basketball court (green # 9) and the seating areas add to the perception that this is a place for the neighborhood (green # 10).

Critical comments included the lack of maintenance (red # 1, 14) and damaged play equipment (red # 6,9, 25). The lack of seating/bleachers for the basketball court was mentioned (red # 10, 11). More vegetation was suggested to enhance attractiveness and serve as sound barrier for the neighbors. Parking was suggested as (red # 11, 31, 36) a measure to improve accessibility.

What do you like about this spot the most?

1	I like that there is an area in our neighborhood where families can gather and children can play together
2	1. That it is open space (Green, no artificial turf) 2. Passive Recreation and enjoyment only 3. We don't pay to own it, or use it 4. Can help w/ Flood mitigation
3	I live across the street (157 Madison Ave). I purchased my home BECAUSE of the park!!
4	The big grass field
5	The location and availability to us
6	The big grassy space
7	The green area, basketball, playground. Nice area to walk my dog on a leash.
8	No Bathrooms! People will live in them!
9	
10	Playground Swing Basketball
11	No lights. No bathrooms. Clean/untreated grass- leave the grass clean (no chemicals/weed killer)
12	I love the green space.
13	Love the field
14	Love the greenery and a nice place for the community kids to play
15	Basketball Court Slide Swing
16	No lights. Not needed!
17	I like that no bathrooms or lights at night
18	No lights! No Bathrooms!
19	Please no lighting + no bathrooms for the park since it's a residential street. Thank you!
20	Lots of space for sports

Madison Park Community Engagement



Where do you see challenges?

1	Improvements: New Baby Swings. Add Swings for older children. Rubber surface. Additional Climbing Area
2	1. Rainwater/flooding - need mitigation on western side 2. Obtaining funding from grants, etc. rather than tax payer dollars to improve flood mitigation and beautification (through garden club, etc.)
3	Get rid of bleachers (x3)
4	New playground
5	No tax \$ for playground - Use Trumbell Park instead. Replace shrubbery to improve water mitigation. Not used enough for public-only functions, mostly for private use. Better fencing.
6	Clear shrubbery by apartments
7	Better fencing
8	Fencing at front to improve child safety (fencing Madison Ave)
9	The playground is too small and not captivating for children ages (0-10)
10	The swingset + playground are not for the kids. My kids get bored very easily + don't enjoy coming here.
11	2 Separate children playsets - 0-3 years. 4-10... Bigger play structure, swing, paved area, track for scooters, bikers, chalk, pathers to play areas. No mulch - walking not putting things in mouths. gated (Safety - not running into sports etc). Benches for parents + grass area to sit +eat. Sahding. Summer water. More swings. restroom (change space for diapers)
12	My kids come to this park all the time but the playground is not big enough for all the little children and young families that have moved to the neighborhood in the last 4 years. A track would be nice. Larger playground, more swings, track
13	Large track surrounding the perimeter to allow for walking, jogging, strollers, biking, etc. Also will prevent tracking through the middle of the park. *Drawing on the back*
14	A bigger playground for kids. On Saturdays this park gets packed and kids are always waiting on swings. So many come here for the location but there needs to be a larger play space for children.
15	Adults Swings 4-6
16	bathroom M& F. Water foundtain?
17	Track to ride bikes
18	Pickle Ball Court! (Lines on improved Basketball court)
19	rubber Base at playground (no wood mulch)
20	If possible, remove grass & replace w/ artificial turf w/ lines for multiple sports (baseball, football, soccer)
21	Excersize area for calisthenics similar to what they have at (overpeck park Leoria)
22	Rotate basketball court 90 degrees and make two courts next to each other!
23	
24	Perimeter fence: need for safety of small children, protect them from running into street and into the dip on the NW side and protect property from unauthorized use. Lock at night. Want lighting for early sunset in winter
25	Playground is for very little kids, needs to have a major upgrade, including swings and rubber mulch

26	Walking trail for adults and kids
27	Fencing improvement for safety. Grates for kids
28	Flatten NW area and remove large tree. Makes more room for black top
29	Expand playground. More swings and benches
30	Improve / Expand the playground area
31	The park space is not utilized productively. As a senior citizen, would like to have a track to walk on around the perimeter of the park
32	Maintain / improve the fields while keeping the green space
33	Improve / Expand the playground with more swings. Move basketball court further to the side and replace the court. Maybe make a path around the exterior of the park
34	Lack of upkeep of equipment, falling limbs and trees over the years, old swings, overflowing garbage cans, fields are not adequate for baseball or soccer, fence broken in spots
35	Baby swings need to upgrade for big kids / monkey bars / tire swings
36	Expand and improve the playground. Also for kids older than toddlers
37	Playground should have better slides
38	The west side of the park is not being used - (behind the line of trees). We also need park benches throughout
39	Need to upgrade (add more fun equipment for all ages) playground. Add lights and bathroom
40	Problem now is that there is no infrastructure friendly for the disabled or elderly. We need to serve the whole community - not only kids
41	Seating, walking path, community is aging - many who live near Madison Ave over 65 (especially in the neighboring domiciles). Aging and disabled need / should be accommodated
42	
43	No benches; if there were benches they should have a back
44	Leave open space in middle of park, but replace with turf! Grass is always dead!
45	Provide improved lighting / fencing to prevent children running into street
46	Swingsets - at least 8 (one ADA accessible, multiple infant, toddler+ children friendly). Soft play surface around playground
47	The park should reflect the residents of the immediate neighborhood - for many seniors a walking trail would be great and benches to sit on
48	I love the green space but I would like it to be replaced with turf with sportsfield lines (football/soccer/baseball). No bathroom no lights
49	Size of playground; much bigger climbing structures and a fence around playground
50	Shade over playground and rubber flooring

D.2 Proposed Design Interventions

D.2.1 Madison Park

The proposed design interventions for Madison Park focus on enhancing accessibility, improving existing programs, and increasing the amount of amenities for all age groups.

A Stone dust loop path that borders the park allows for exercise and accessibility for those with mobility issues. Numerous benches and seating areas offer locations to rest, enjoy the view, and have a conversation. One sets of picnic tables as well as benches and bleachers located at all spaces support the social aspects of the park.

The one playground in the southeast corner of the park will stay in the same space, but become updated, and two more playgrounds allow play for all ages. It is suggested that the northernmost playground shall feature equipment for toddlers and younger children(ages 2-5). The adjacent playgrounds supports play for children aged 5-12, and the southernmost playground supports older children and teenagers. The added bleachers and other seating at the court and fields will make it possible to watch games, supporting social interaction.

The Western edge of the park boasts mature

Maples that provide ample shade. It is suggested to plant addition maples in this area for accelerating succession once these mature plants die. Across the park, additional tree plantings provide shade and mark seating areas.

The proposed design interventions would include:

New plantings (palette on next page)

Pathways:

800' length of 6' path

120' length of 4' path (including ADA)

Playground 1: 35' x 28'

Playground 2: 44' x 28'

Playground 3: 43' x 37'

Suggested next steps include engaging a NJ licensed landscape architecture firm to develop a feasibility study for the landscape improvements, including cost estimates.

Madison Park



D.2.2 Playground Equipment

Based on recommendations by community members it is suggested to provide multiple play areas for different age groups.

Playground 1: 35' x 28'

Ages: 2-5

Suggestion: Burke Level X Launch



Capacity: 10

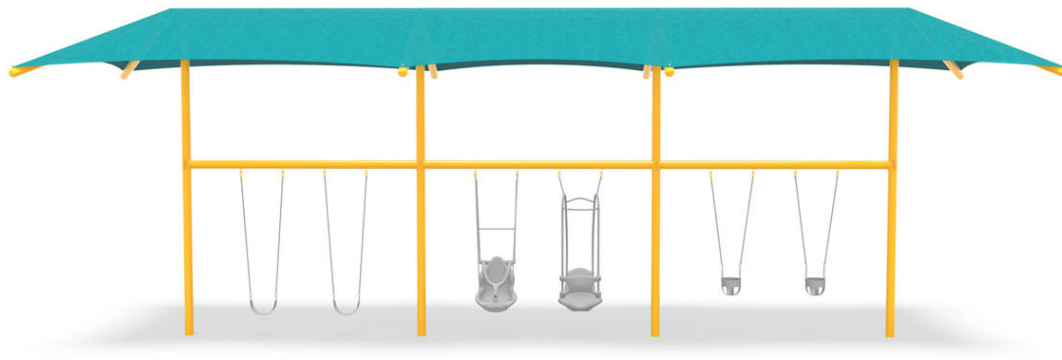
Fall Height: 30"



Playground 2: 44' x 28'

Ages: 5-12

Suggestion: Burke Swingplay Max Triple Bay Swing



Choose From Any Combination of Burke's Swing Seats (sold separately)**



Polyethylene



Belt



Freedom



Konnection



Tot**

Approximate List Price: Varies by Swing Selection

Playground 3: 43' x 37'

Ages: 5-12

Suggestion: Burke Nucleus NU-3174



Approximate List Price*: \$34,738

ASTM Use Zone: 43' x 37'

Capacity: 43

Fall Height: 82"

Play Events: 9

D.2.3 Plant Schedule

The Western edge of the park boasts mature Maples that provide ample shade. It is suggested to plant addition maples in this area for accelerating succession once these mature plants die. Across the park, additional tree plantings provide shade and mark seating areas.

MADISON PARK PLANT SCHEDULE				
SYMBOL	CODE	BOTANICAL / COMMON NAME	QTY	DETAIL
TREES				
	AR	Acer rubrum / Red Maple	3	Deciduous
	AS	Acer saccharum / Sugar Maple	1	Deciduous
	CC	Cercis canadensis / Eastern Redbud	3	Deciduous
	TO	Thuja occidentalis / American Arborvitae	9	Evergreen
	UA	Ulmus americana / American Elm	1	Deciduous
SHRUBS				
	HQ	Hydrangea quercifolia / Oakleaf Hydrangea	6	Deciduous
	VD	Viburnum dentatum / Viburnum	4	Deciduous

Red Maple



Sugar Maple



Eastern Redbud



Arborvitae

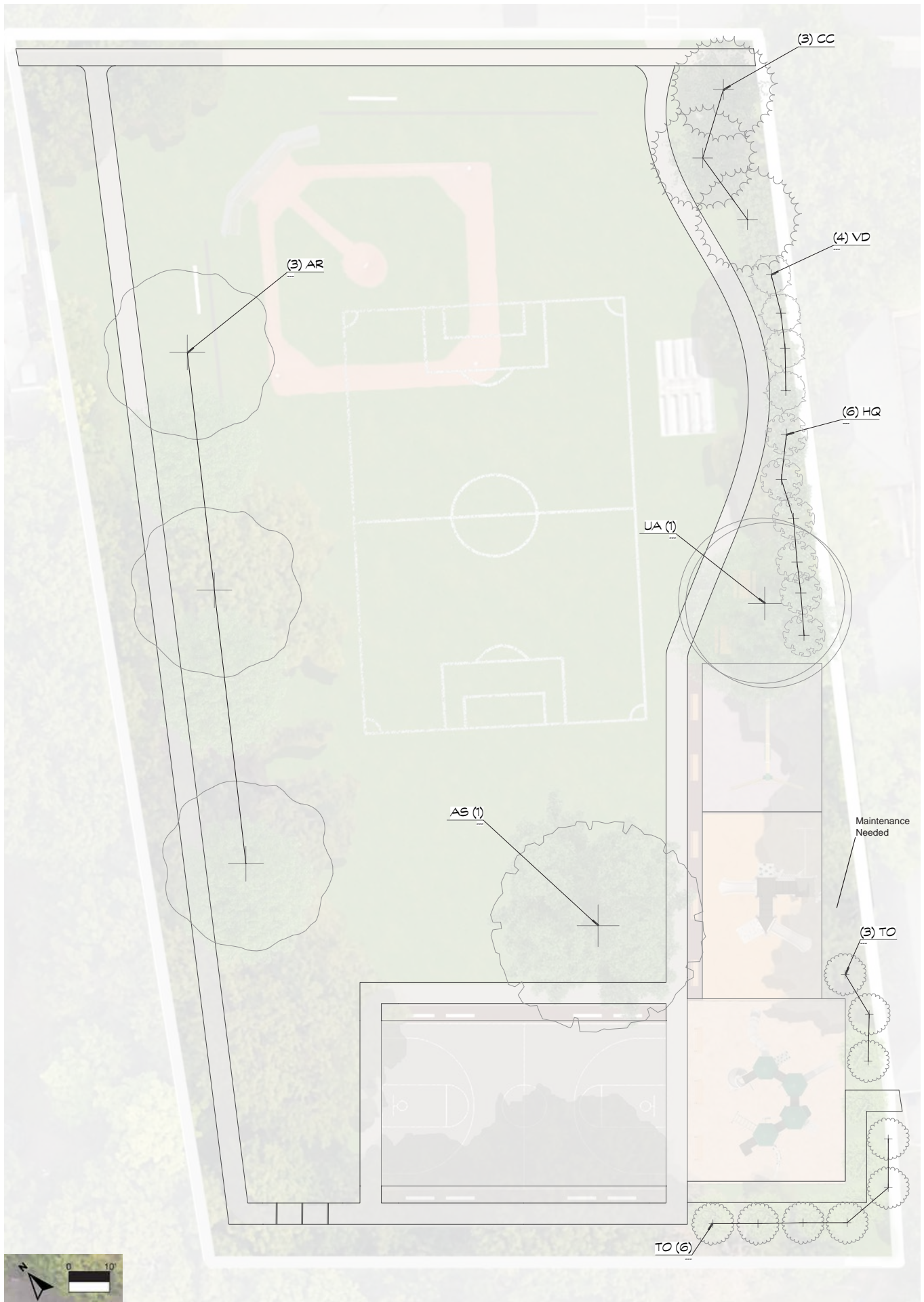


American Elm



Oakleaf Hydrangea Viburnum Dentatum





D.2.4 ADA Accessibility

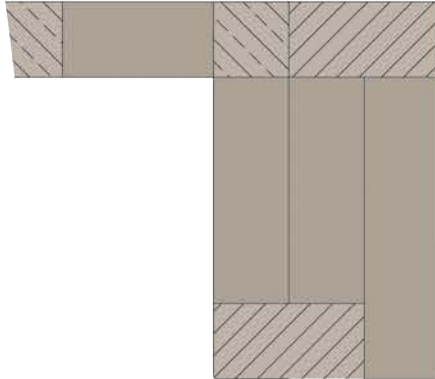
The Southwest corner of Madison Park contains a dramatic topography change. The CUES team estimates a 5' elevation drop from east to west over an area of around 30'.

On the main loop path steps can be found west of the basketball court in this area of the park. An ADA accessible ramp must be installed for wheelchair users to access the path bordering the western edge of the park.

ADA regulations state a ramp must not exceed a slope of 1/12 and after 30' must provide a flat "rest" area.

The CUES team has provided 3 regulation path options for this area of the park.



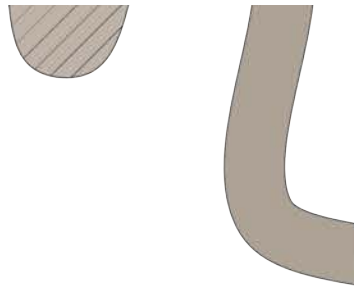


Option 1: Maze

Length: 110'

Width: 6'

Hatches represent "rest" areas and they are located after every 20 or 25' of ramp.

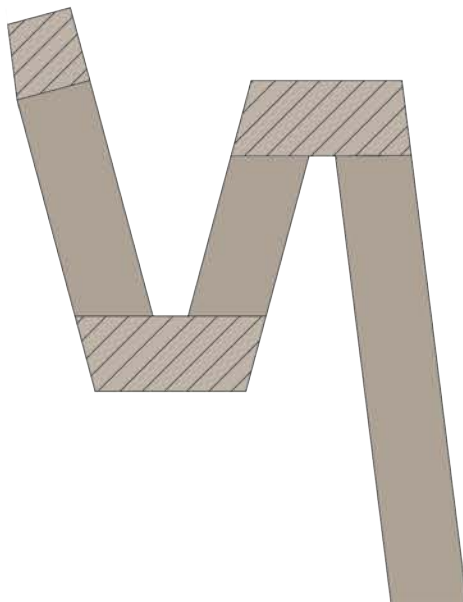


Option 2: Winding Path *As seen in plan*

Length: 60'

Width: 4'

One "Rest" area is located after 30' of ramp



Option 3: Zig Zag

Length: 80'

"Rest" areas are located at every change of direction